

# ICES & Human Dimensions

Nathalie Steins

**Long Distance Advisory Council**

19 May 2026



**ICES**  
**CIEM**

International Council for  
the Exploration of the Sea

Conseil International pour  
l'Exploration de la Mer



## *Introduction*

# Who am I?

- Sociologist
- Wageningen Marine Research (NL) & Delta Climate Center (NL)
- Research themes: science-industry research collaboration, integrating fishers' experiential knowledge, fisher(ies) behaviour studies, policy impacts on fishing and coastal communities
- Previous roles: PhD research, Dutch fishing industry, Marine Stewardship Council



## Introduction

# My role in ICES

- Chair of the **Human Dimension Steering Group (HUDISG)**
- Member of Science Committee (SCICOM)
- Member of Working Group on Social Dimensions (WGSOCIAL)
- Member of Working Group on Innovative Fishing Gear
- Chair of several expert groups



The infographic for HUDISG features a dark blue background with white and yellow icons representing various aspects of marine science and social science, including a ship, a person at a laptop, a bar chart, wind turbines, and a network diagram.

**ICES CIEM** International Council for the Exploration of the Sea  
Conseil International pour l'Exploration de la Mer

## HUDISG

### Human Dimension Steering Group

**RESEARCH FOCUS**

The Human Dimension Steering Group is leading social sciences and humanities related expert groups at ICES.

**OUR OBJECTIVE**

Guiding and supporting ICES expert groups that are working on social sciences and humanities - from evaluating contributions of the sea to livelihoods, cultural identities and recreation to informing ecosystem status assessments, policy development and management.

**OUR EXPERTISE**

- Balancing Economic, Social and Ecological Objectives
- Economics
- History of Fish and Fisheries
- Maritime Systems
- Marine Planning and Coastal Zone Management
- Resilience and Marine Ecosystem Services
- Social Indicators

**OUR CHAIR**

Nathalie Steins

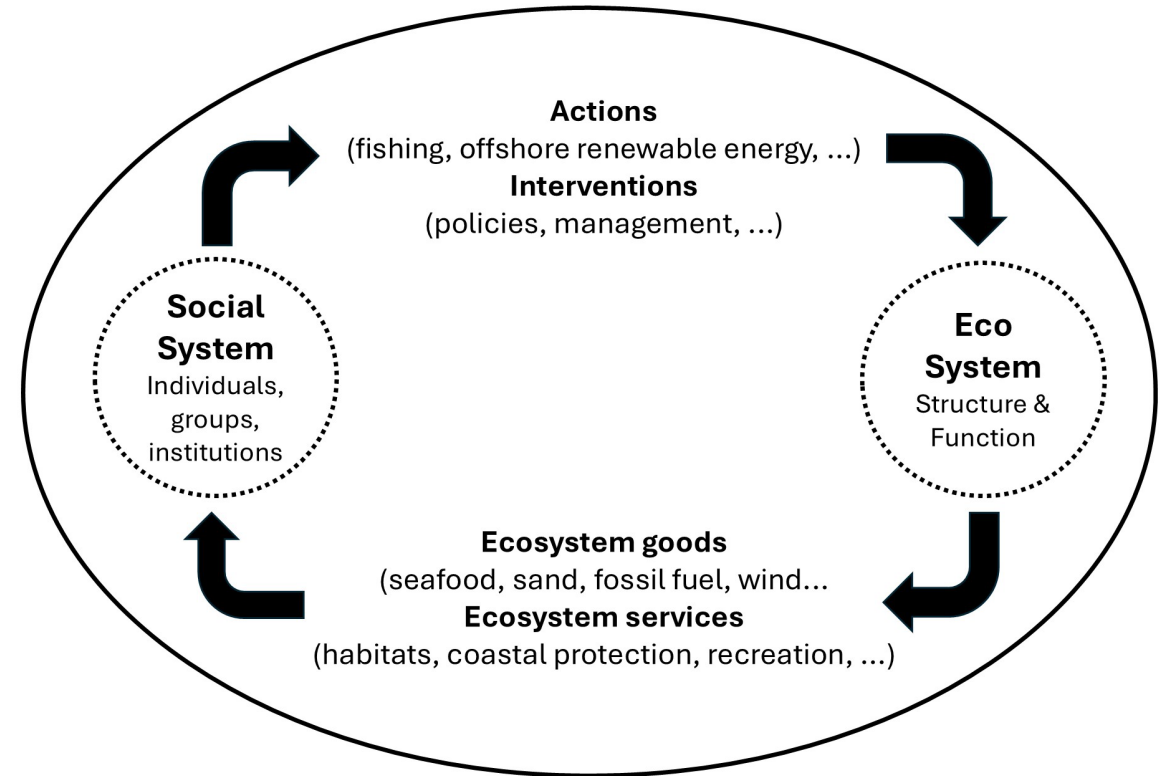
Scan and learn more about our work

# Why a Human Dimension Steering Group?

**the marine  
ecosystem**

=

**a social-  
ecological  
system**



# The Human Dimension Steering Group

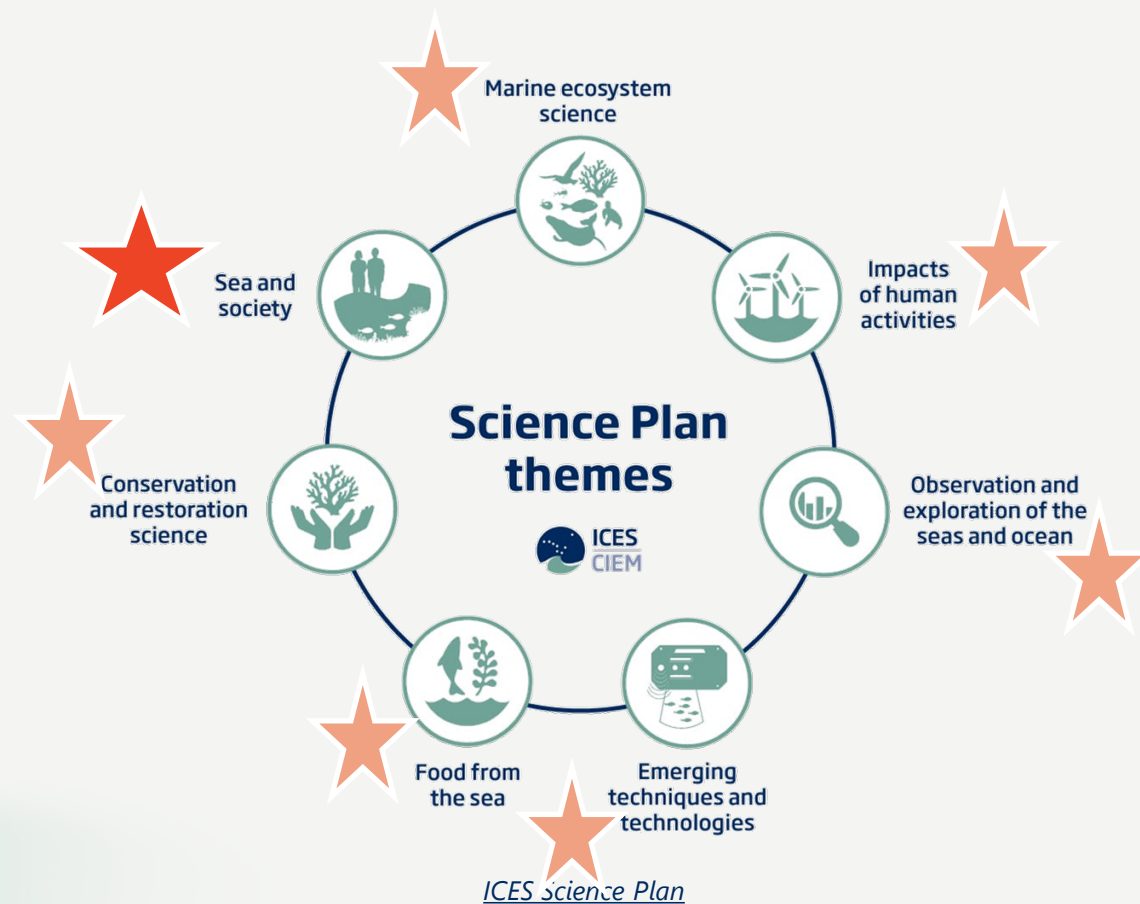


- Link “human dimension” and other SGs, SCICOM & ACOM
- Provide methods, tools & assessment frameworks as part of integrated, co-produced science and advice
- Develop social and economic indicators
- Explore social-ecological change
- Assess socioeconomic impacts of management actions
- Investigate resilient futures

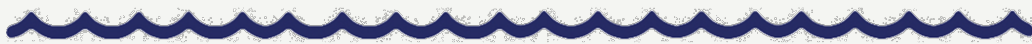
# Our HUDISG expert groups

- [WGBESEO](#) - Working Group on Balancing Economic, Social, and Ecological Objectives in Integrated Assessments
- [WGECON](#) - Working Group on Economics
- [WGENGAGE](#) - Working Group on Stakeholder Engagement
- [WGHIST](#) - Working Group on the History of Fish and Fisheries
- [WGINGG](#) - Working Group on Innovative Fishing Gear
- [WGMARS](#) - Working Group on Maritime Systems
- [WGRMES](#) - Working Group on Resilience and Marine Ecosystem Services
- [WGMPCZM](#) - Working Group Marine Planning and Coastal Zone Management
- [WGSOCIAL](#) - Working Group on Social Dimensions
- [WKPartMod2](#) – 2nd Workshop on Participatory Modelling
- [WKGuideSSM](#) - Workshop on developing Guidance for application of Social Science Methods within ICES
- **Guest:** [WGSEDA](#) – Working Group on Social and Economic Dimensions of Aquaculture

# Human Dimensions in ICES Science Plan

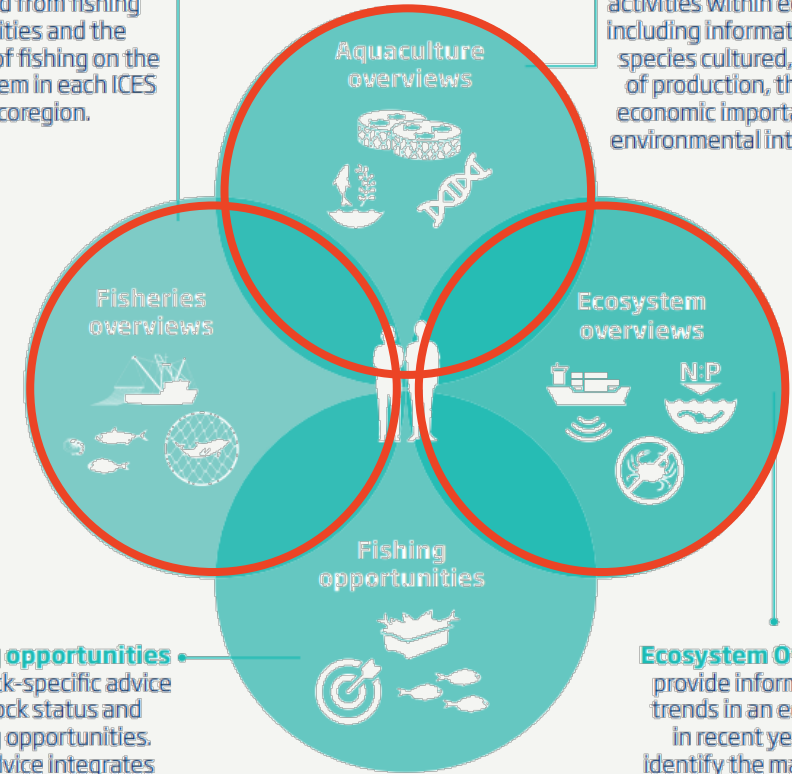


# Human Dimensions in ICES Advice



**Fisheries Overviews** summarize the services derived from fishing activities and the effects of fishing on the ecosystem in each ICES ecoregion.

**Aquaculture Overviews** summarize aquaculture activities within ecoregions, including information on the species cultured, the level of production, the socio-economic importance, and environmental interactions.



**Fishing opportunities** give stock-specific advice on stock status and fishing opportunities. This advice integrates the precautionary approach, with the objective of achieving maximum sustainable yield (MSY).

**Ecosystem Overviews** provide information on trends in an ecosystem in recent years and identify the main human pressures, explaining how these pressures affect key ecosystem components.

*ICES Special Request Advice  
Ecoregions in the Northeast Atlantic and adjacent seas  
Published 22 October 2020*

## EU request on review of innovative gears for potential use in EU waters and their impacts

### Advice summary

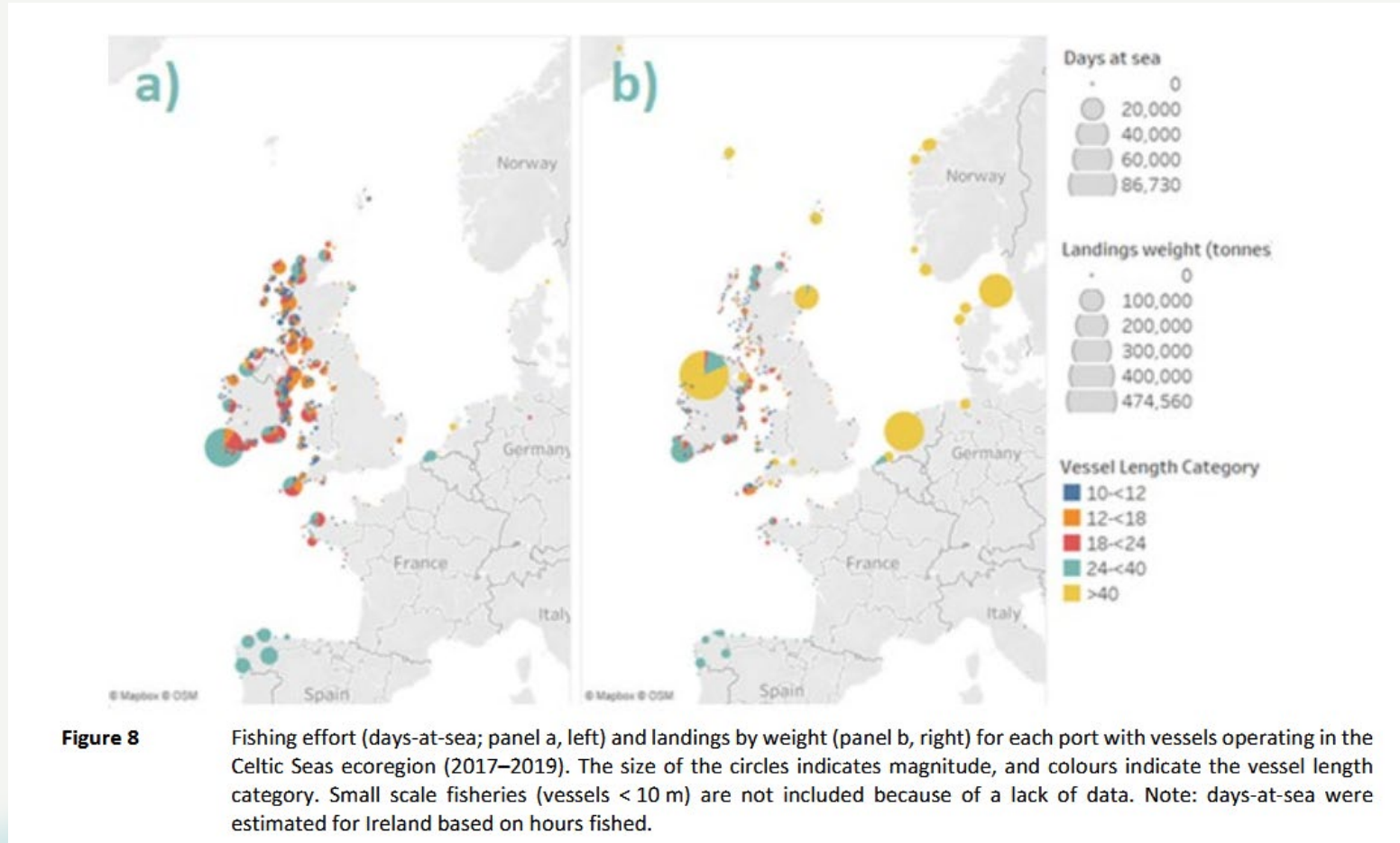
ICES advises that technical innovations are always sociotechnical. The level of uptake and sociotechnical aspects associated with the innovation should therefore be part of the development of a more comprehensive state-of-the-art review.

Full advice summary: <https://doi.org/10.17895/ices.advice.7513>

- Subsequent [advice 2023 developed PESTEL framework](#) for assessing barriers and opportunities for systematic uptake of gear innovations
- 2026 advice will assess uptake of various gears using PESTEL

## Ecosystem Overviews (EOs)

- Social and economic section
- Fishing communities map
  - Available for EO Celtic Ecoregion, EO Greater North Sea
- Will move into Fisheries Overviews



*ICES Special Request Advice*

*Baltic Sea, Celtic Seas, and Greater North Sea ecoregions*

*Published 11 April 2025*



## **EU request on economic, social, and ecological impacts of offshore wind farms (OWFs) and floating offshore wind farms (FLOWs) on fisheries in the Baltic Sea, Celtic Seas, and Greater North Sea**

### **Advice summary**

Systematic review of available studies identified OWF and FLOW impacts on income, fishing grounds, catch opportunities and operating costs in EU Member States. For all types of impacts, there were more studies reporting on negative impacts on fisheries than studies reporting on positive impacts. Observed impacts were dependent on context factors such as the type of wind farm, development phase of the wind farm (pre-construction, construction, operation, or decommissioning), and adaptive capacity of fishers. ICES did not identify any studies of trade-offs between the economic impacts of fisheries and wind farms.

ICES identifies five classes of data that are required for assessments of the economic and social impacts of wind farms on fisheries: vessel positional data, fisheries catch and effort data, fisheries economic data, fisheries social data and OWF and FLOW data. Existing available data are mostly not collected or collated at sufficiently high resolution, and cannot yet be linked in ways that enable full evaluation of direct or indirect economic and social impacts of wind farms.

# Fishing opportunities advice

- **No human dimensions considerations**
- Not requested by ICES advice requesters
- Social and economic assessments for 'the options table' is possible
- Indicator development is needed and ongoing
- Clear social and economic objectives in fisheries policies would help
- Increasing attention for social and economic objectives, indicators and data collection in EU DGMARE
- A 'demonstration advice' may be the way forward

# Thank you


[nathalie.steins@wur.nl](mailto:nathalie.steins@wur.nl)

<https://www.ices.dk/community/groups/Pages/HUDISG.aspx>

Explore, connect, engage

 [www.ices.dk](http://www.ices.dk)

 [ICESmarine](https://www.facebook.com/ICESmarine)

 [icesmarine](https://www.linkedin.com/company/icesmarine)

 [ICESmarine](https://www.youtube.com/ICESmarine)

 [@icesmarine.bsky.social](https://bsky.app/profile/@icesmarine.bsky.social)