

THE HAGUE



MAY 20th, 2025

CARING FOR THE OCEAN, SECURING TOMORROW:

*improving Swordfish and
Blue Shark fisheries*



Cofinanciado por
la Unión Europea



What is **Fip Blues?**

FIP (Fisheries Improvement Project) is a voluntary initiative for the comprehensive improvement of the **Swordfish** (SWO) and **Blue Shark** (BSH) fisheries of the Galician surface longline fleet.

Promoted by the extractive sector, 4 producer organisations, and 12 companies in the marketing and processing sector.

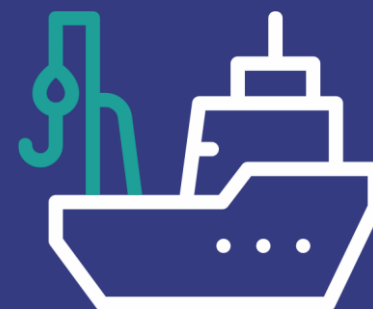




What is **Fip Blues**?

80%

of the EU supply chain for blue shark and swordfish.



119 Longline vessels

More than 80% of Spanish vessels in ICCAT.

89.17% share in North Atlantic and 97.53% in South Atlantic

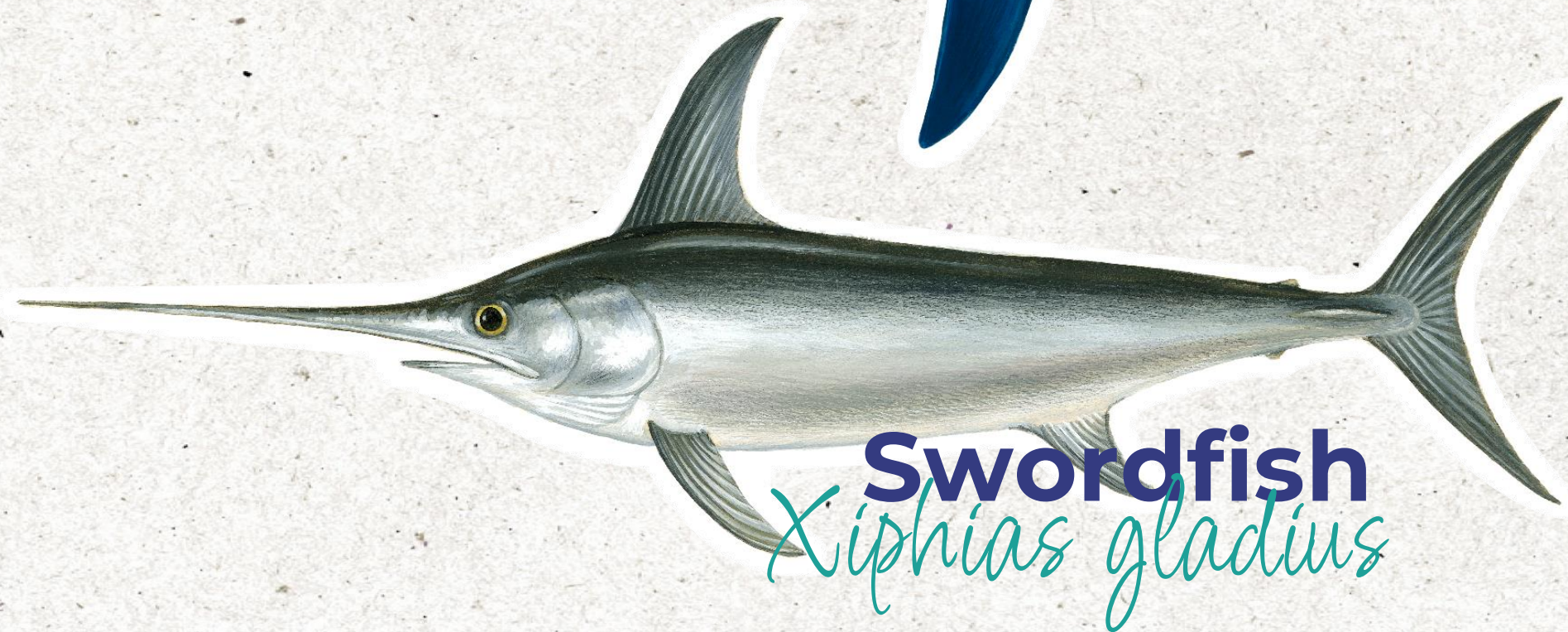
Percentage quota for Fip Blues vessels, considering the unified surface longline census (Resolution of 17 February 2025).



What is **Fip Blues**?

Blue shark

Prionace glauca



Swordfish

Xiphias gladius

Blue shark and swordfish
account for approximately

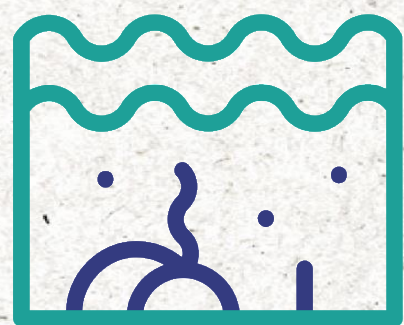
90%

of **FIP BLUES** catches.

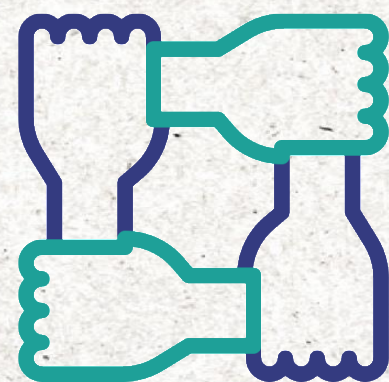


What is **Fip Blues**?

Sustainability in fishing is built by balancing three pillars:



Protect **marine ecosystems**.



Strengthen **fishing communities**.

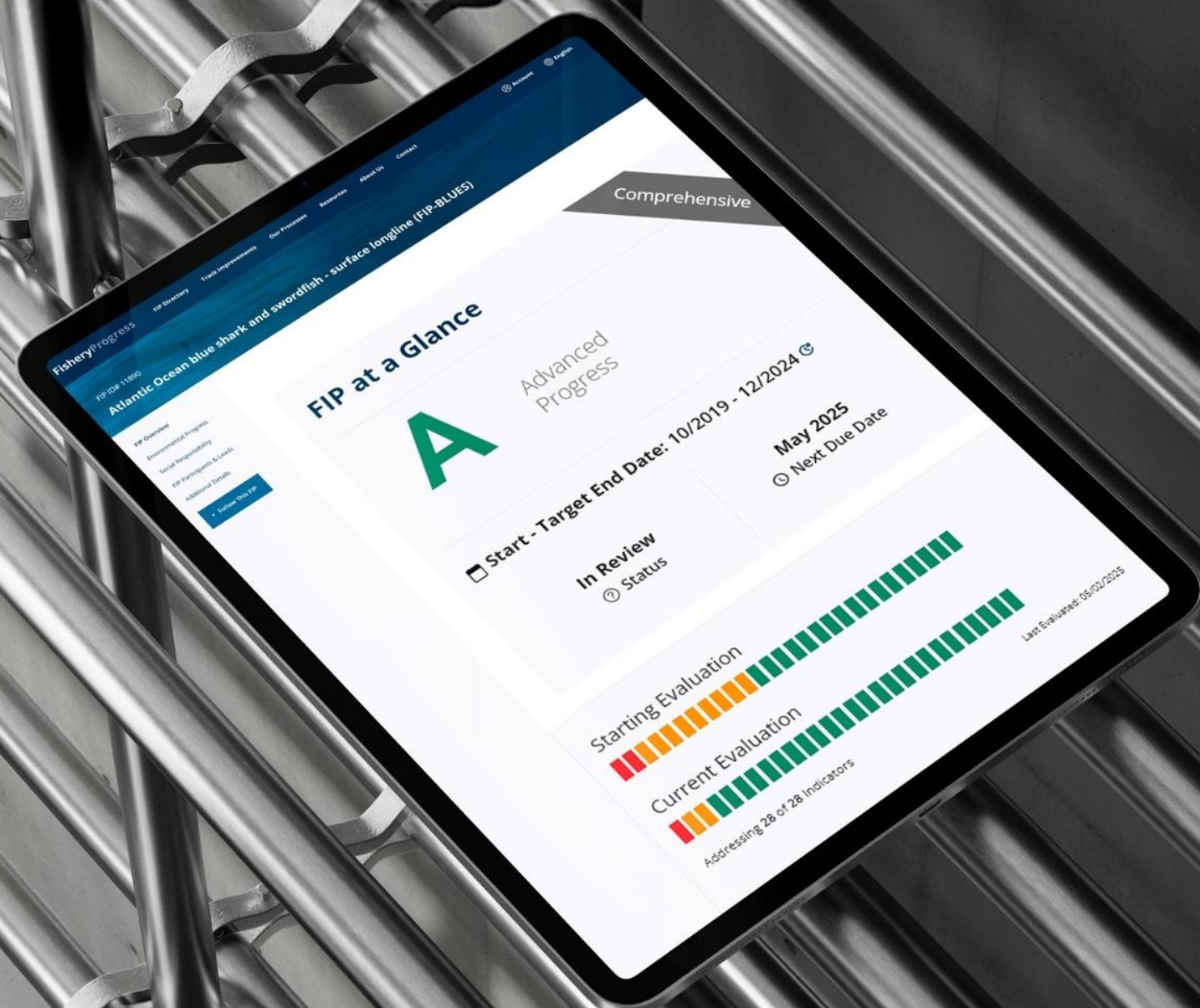


Ensuring the sector's long-term **profitability**.





What is **Fip Blues**?



The project is advancing steadily and positively, a progress acknowledged by external entities such as Fishery Progress and certification bodies.



www.fisheryprogress.org



Improvement in the **management and status of target populations.**



NO FINNING
COMPREHENSIVE
UTILISATION

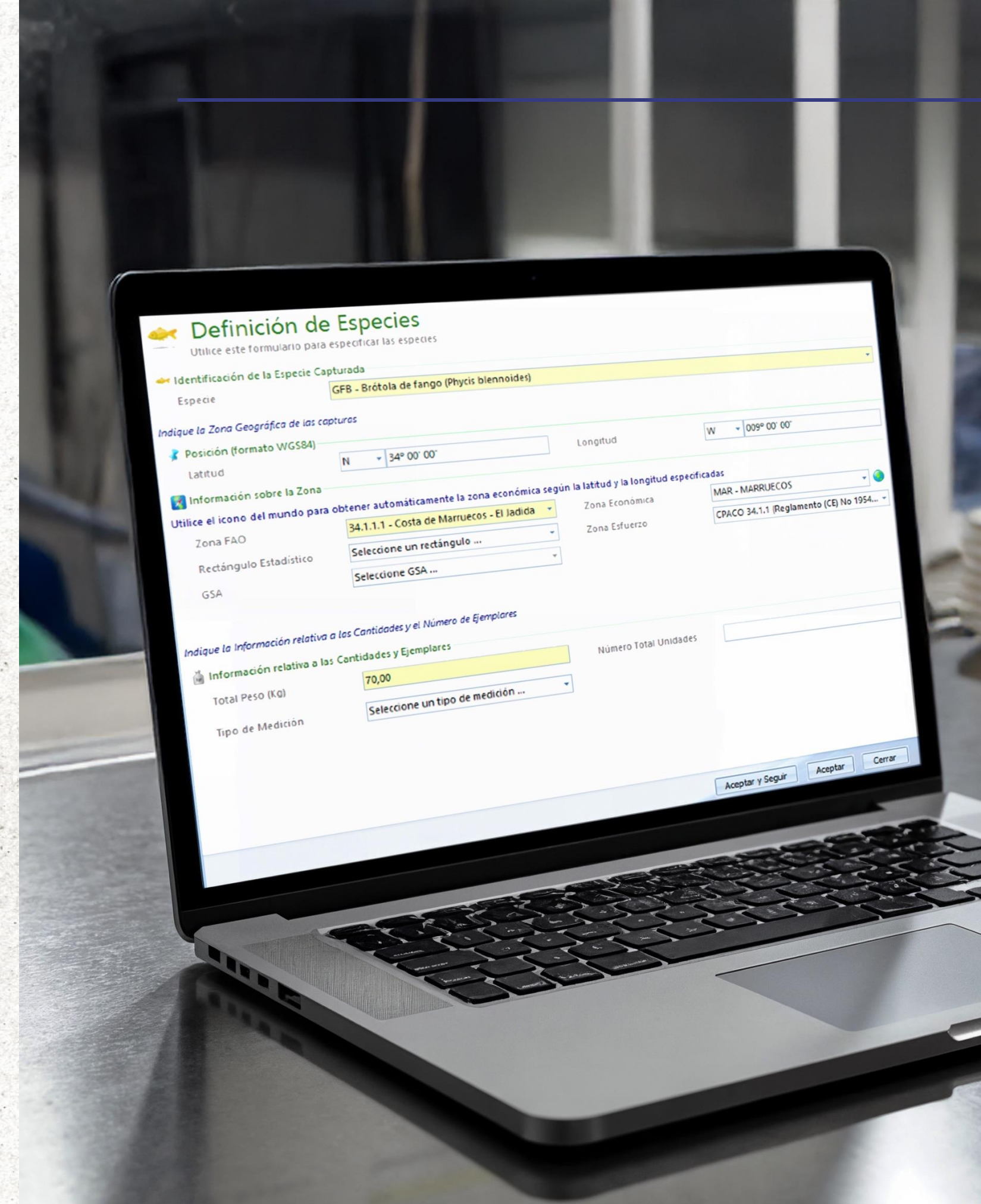
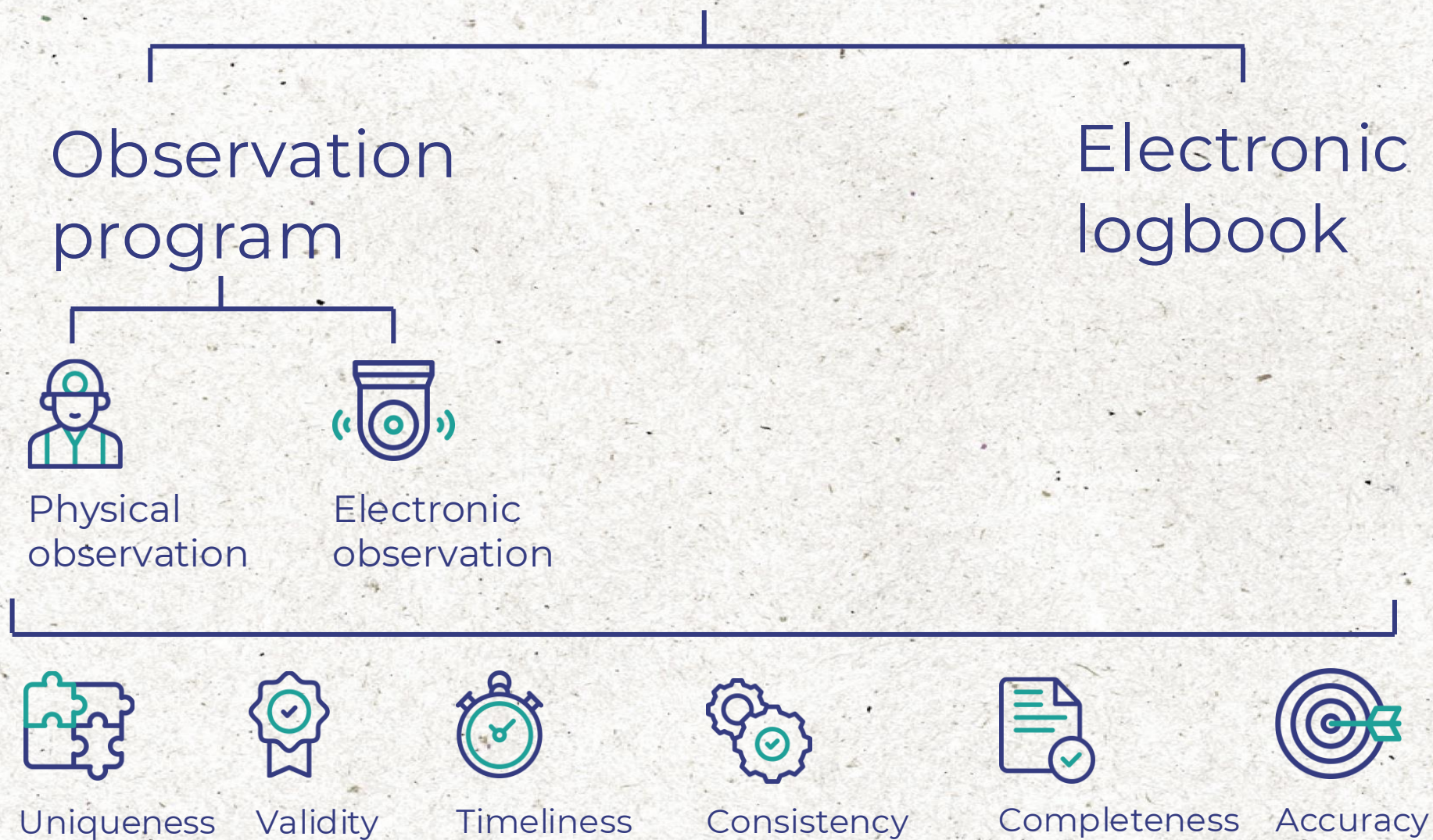


CITES
CERTIFICATES





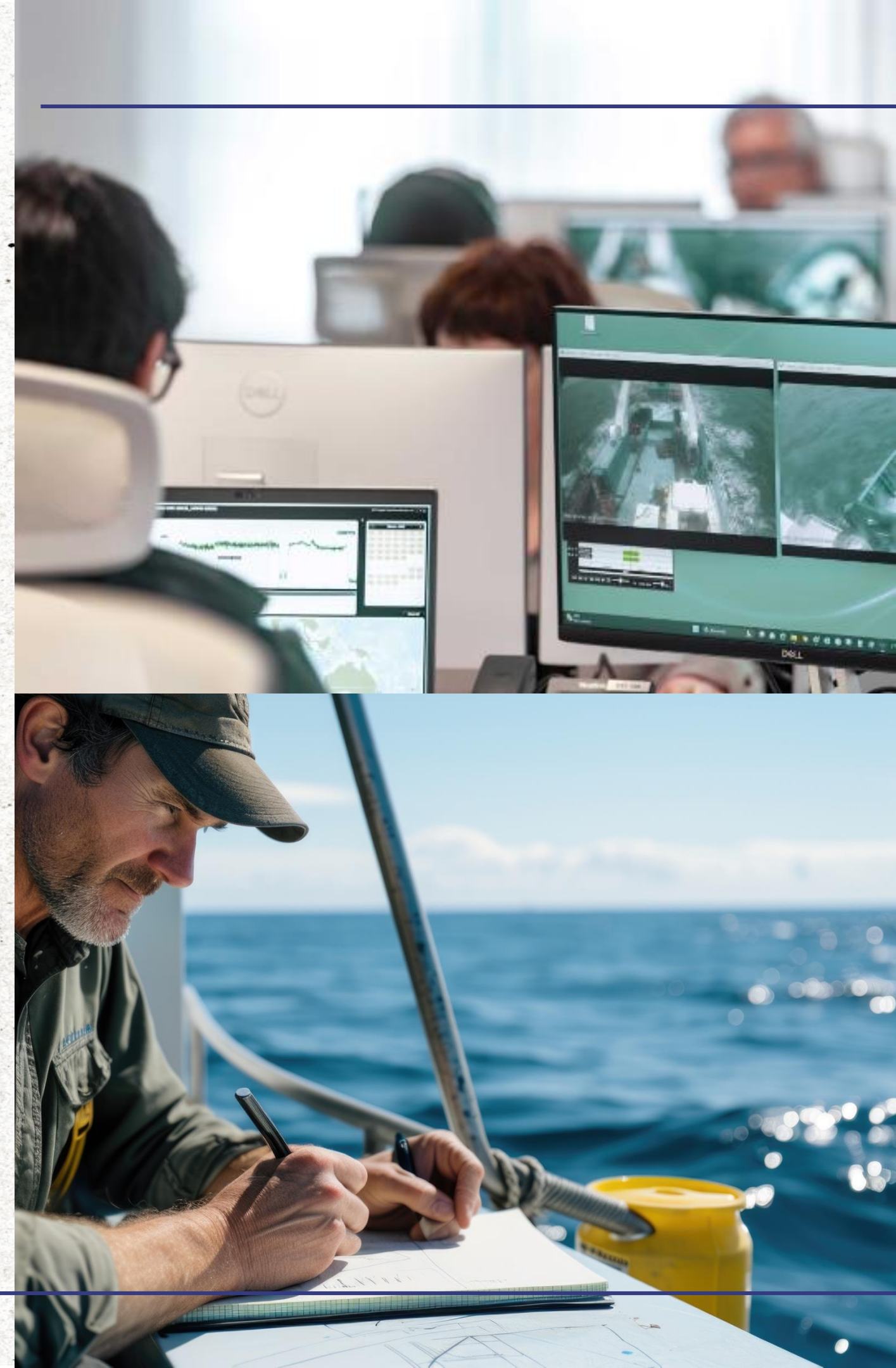
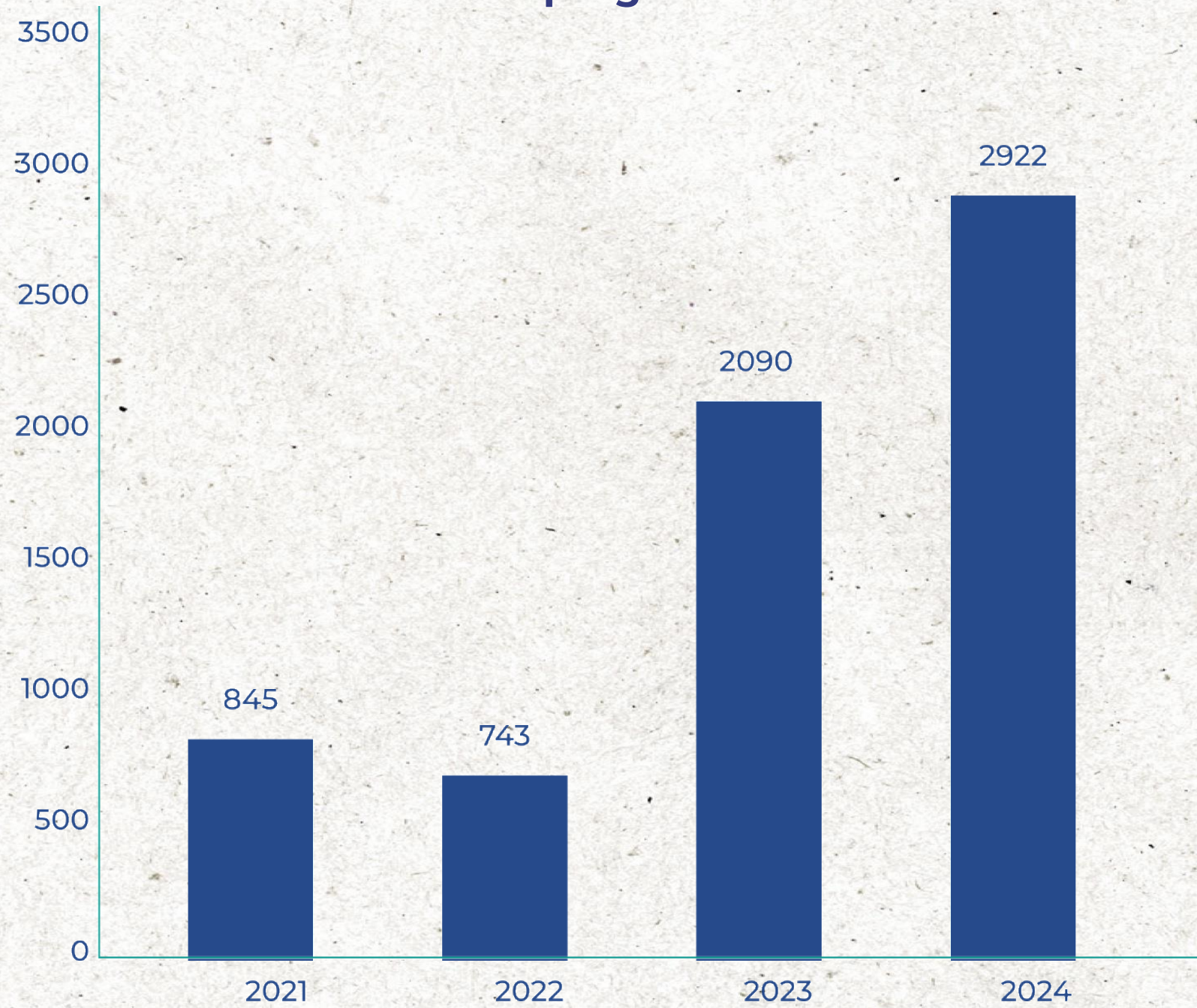
Improvement of information and data on species related to fishing: primary species and ETP.





Improvement of information and data on species related to fishing: primary species and ETP.

Observation programme data

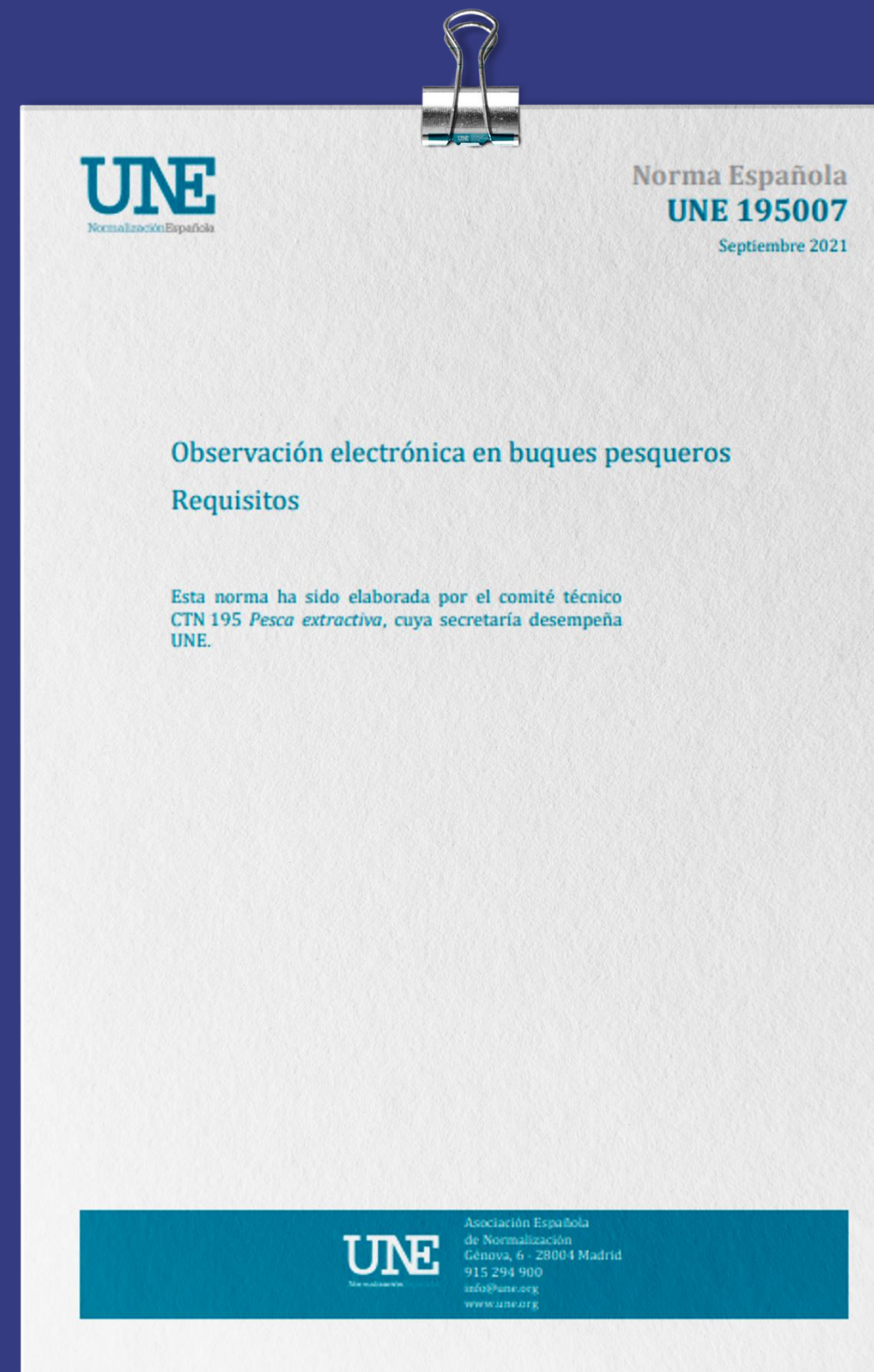


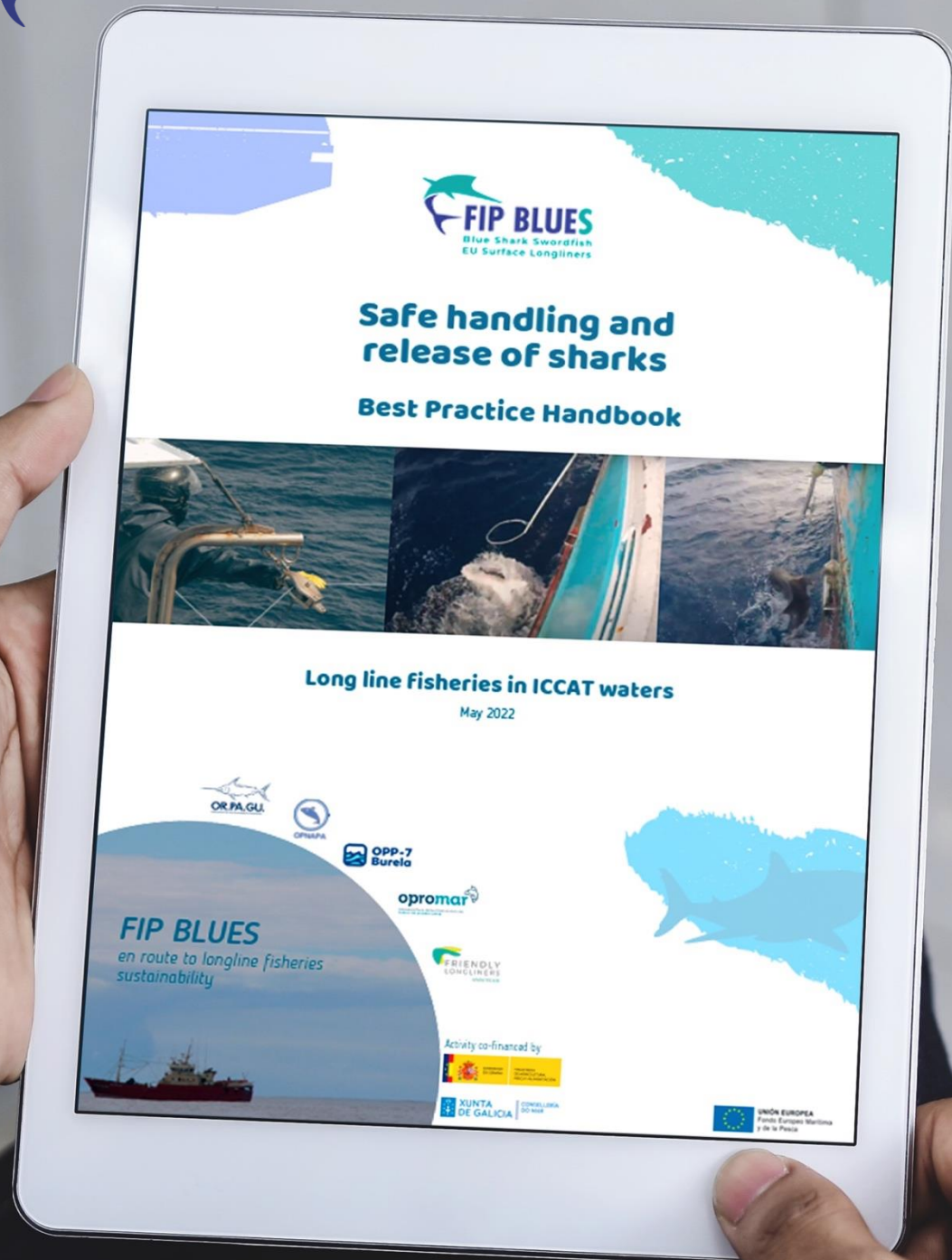


Improvement of information and data on species related to fishing: primary species and ETP.



Standardisation and certification of electronic observation processes in longline fishing.





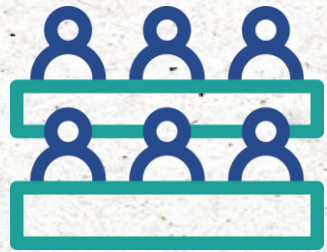
Implementation of best practices on board and exploration of interaction mitigation techniques (with ETP and other non-target species).



Preparation of **guides for good handling and release practices.**

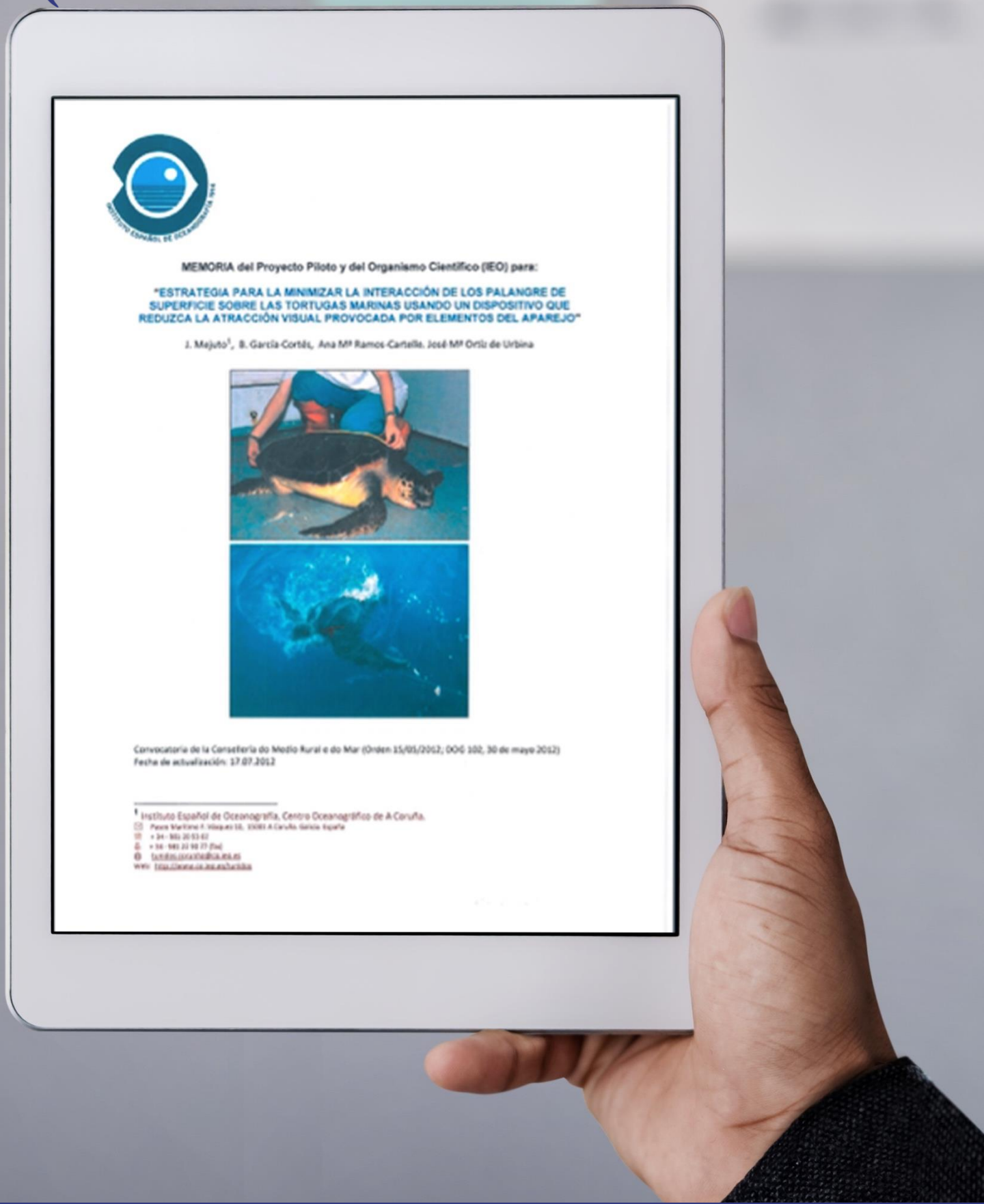


Implementation of best practices on board and exploration of interaction mitigation techniques (with ETP and other non-target species).



Training workshops for crews to teach first aid and appropriate techniques for removing hooks and subsequently releasing turtles.





Implementation of best practices on board and exploration of interaction mitigation techniques (with ETP and other non-target species).



Collaboration with research organisations, NGOs and government bodies for the implementation of projects.



The Trap-Line pilot project

The Trap-Line Pilot Project **allows vessels that request it to carry out experimental fishing trips using this new technique**, under strict scientific supervision. Observers supervised by the Spanish Institute of Oceanography (IEO) will collect key data on board on the efficiency of the gear, its impact on ecosystems and its selectivity.



Implementation of best practices on board and exploration of interaction mitigation techniques (with ETP and other non-target species).



Design of proprietary ‘turtle excluders’ adapted to the specific characteristics of longline vessels and the different sizes of this animal commonly found in fishing gear.





Marine Turtles interaction with fishery

87%

of the turtles are released alive into the North Atlantic.



72%

of the turtles are released alive into the South Atlantic.



Marine Mammals and Seabirds interactions with fishery

50 interactions in 4 years.

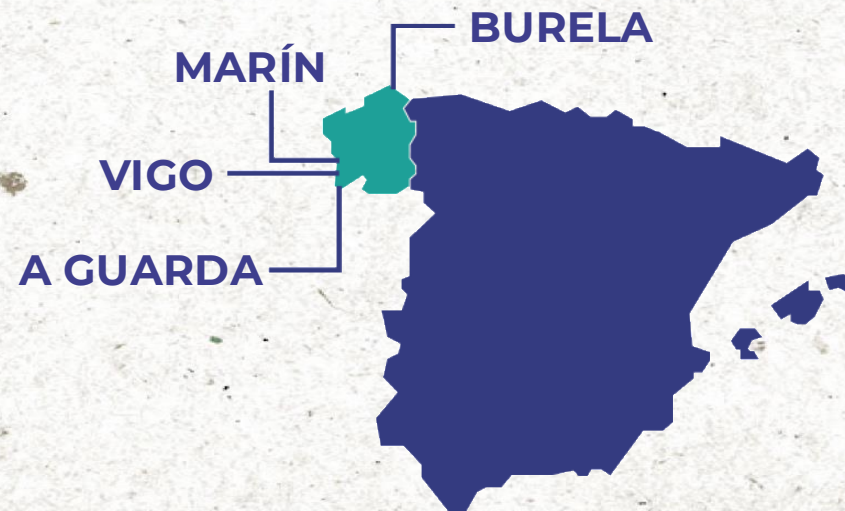
The false killer whale is usually the main species that interacts with longlines in the North and South Atlantic, which is also indicated in the captains' electronic fishing log. The false killer whale is an active predator that hunts sharks and swordfish to feed on their livers.

With regard to seabirds, observers have only recorded four specimens during the four-year period.

Marine Mammals and Seabirds	North	South	Atlantic Ocean
DBO_Bottlenose dolphin	1	3	4
DCL_Clymene dolphin		2	2
DLP_Dolphins nei	1		1
FAW_False killer whale	4	1	11
HUW_Humpback whale		2	2
ODN>Toothed whales nei		3	3
SEK_South African fur seal		1	1
BWD_White-beaked dolphin	1		1
DCO_Common dolphin		1	1
DSA_Atlantic spotted dolphin		1	1
KIW_Killer whale		1	1
MAM_Aquatic mammals NEI	1		1
MIW_Minke whale		1	2
DIC_Grey-headed albatross		2	2
DCR_Atlant. yellow-nosed albatross		20	20
PCN_Spectacled petrel		3	3
PUG_Great shearwater		1	1
ALL Marine Mammals and Seabirds	8	42	50



FIP SOCIAL



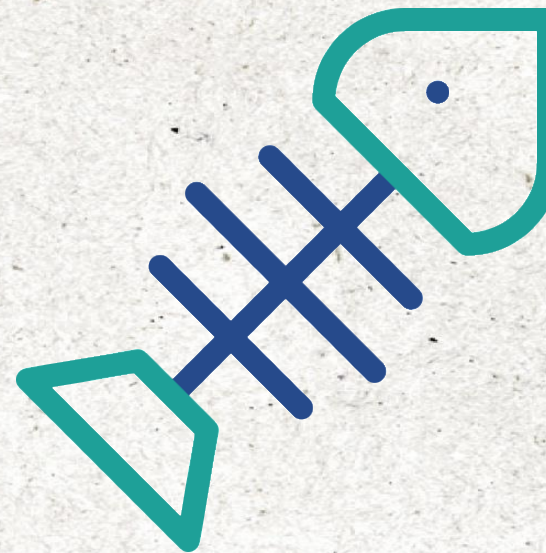
Four fishing ports dependent on this activity.



Implementation of ILO Convention No. 188. Obtaining work certificates in the fishing industry.



2200 people depend directly on this fishery.



Economic and business activity generated from the **full use of these catches:** gastronomy, medicine and health, trade, etc.

SEVILLA



19th NOVEMBER, 2025

CARING FOR THE OCEAN, SECURING TOMORROW:

*improving Swordfish and
Blue Shark fisheries*

